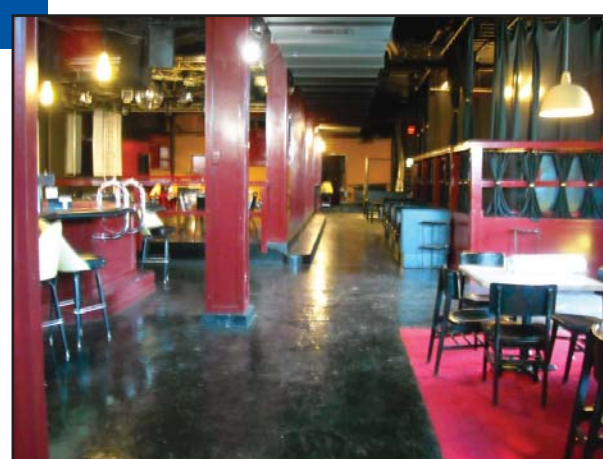


ELEMENT LOUNGE

Business for Sale



16,500 Sq Ft Space Available - 3 Floors
1915 Main Street, Kansas City, Missouri



- Recently updated and remodeled
- Complete kitchen plus three bars
- Fully equipped, code compliant
- Desirable Crossroads area location
- Additional parking available
- Rent only \$6.50/sq ft
- Asking price: \$79,500

BLOCK & COMPANY, INC., Realtors 816.753.6000
In the Skelly Building on the Country Club Plaza
605 West 47th Street, Suite 200, Kansas City, Missouri 64112

For Information Contact:

Larry Gaines
816.412.7387
lgaines@blockandco.com

Jerry Gaines
816.412.7389
jgaines@blockandco.com

SUMMARY DEMOGRAPHIC PROFILE

1990 - 2000 Census, 2009 Estimates & 2014 Projections

Calculated using Proportional Block Groups

Lat/Lon: 39.089887/-94.583372

February 2010

RS1

1915 Main Street Kansas City, Missouri		1.00 mi radius	3.00 mi radius	5.00 mi radius
POPULATION	2009 Estimated Population	8,162	92,970	225,105
	2014 Projected Population	8,359	90,268	217,424
	2000 Census Population	7,349	97,460	241,813
	1990 Census Population	7,506	104,495	257,681
	Historical Annual Growth 1990 to 2009	0.5%	-0.6%	-0.7%
	Projected Annual Growth 2009 to 2014	0.5%	-0.6%	-0.7%
	2009 Median Age	33.9	33.2	33.6
HOUSEHOLDS	2009 Estimated Households	3,850	40,492	95,021
	2014 Projected Households	4,035	40,192	93,956
	2000 Census Households	3,112	41,227	100,249
	1990 Census Households	3,039	44,938	108,008
	Historical Annual Growth 1990 to 2009	1.4%	-0.5%	-0.6%
	Projected Annual Growth 2009 to 2014	1.0%	-0.1%	-0.2%
POPULATION BY RACE	2009 Estimated White	49.5%	41.2%	46.5%
	2009 Estimated Black or African American	33.4%	43.1%	39.0%
	2009 Estimated Asian & Pacific Islander	1.5%	3.0%	2.8%
	2009 Estimated American Indian & Native Alaskan	0.5%	0.5%	0.5%
	2009 Estimated Other Races	15.1%	12.3%	11.3%
	2009 Estimated Hispanic	29.1%	23.2%	22.3%
INCOME	2009 Estimated Average Household Income	\$ 42,419	\$ 37,370	\$ 44,472
	2009 Estimated Median Household Income	\$ 34,537	\$ 30,891	\$ 37,252
	2009 Estimated Per Capita Income	\$ 22,085	\$ 17,143	\$ 19,259
EDUCATION (AGE 25+)	2009 Elementary	5.2%	5.8%	5.5%
	2009 Some High School	10.3%	13.6%	12.9%
	2009 High School Graduate	27.1%	30.9%	31.6%
	2009 Some College	20.2%	20.1%	19.4%
	2009 Associates Degree Only	6.3%	6.0%	6.3%
	2009 Bachelors Degree Only	20.2%	15.3%	15.4%
	2009 Graduate Degree	10.7%	8.2%	8.9%
BUSINESS	Number of Businesses	2,985	9,047	14,787
	Total Number of Employees	83,728	184,643	284,661
	Employee Population per Business	28.1	20.4	19.3
	Residential Population per Business	2.7	10.3	15.2

This report was produced using data from private and government sources deemed to be reliable. The information herein is provided without representation or warranty.

Business Name: Element Lounge
Address, City, State: 1915 Main Street, Kansas City, Missouri
Type: Bar, Lounge, Restaurant

Financials

Asking: \$79,500

Included in the Asking Price: Furniture, fixtures, equipment: *(has passed all permit and codes inspections)*
POS system
ADA compliant restrooms,
dishware, silverware, and bar equipment

Gross: CLOSED

Summary Description:

If location is truly everything than the Element Lounge is perfect. Three floors with at least three bars plus an updated kitchen. The right person could change the concept for little investment and with three available floors could easily do a lucrative business. There is an excellent mix of successful businesses next to and nearby the Element Lounge.

General Information

Year Established: 2009

Facilities: 16,500 sq ft - 3 floors

Rent: \$8,750 per month - Additional parking lot available

Market Outlook

Competition: Yes

Growth & Expansion: Room to expand up to 16,500 sq ft (no additional rent). Room, for live entertainment and dancing. Room for private parties and banquet functions.

About the Sale

Financing: No

Support/Training: Yes

Reason Selling: Partnership going different directions

Contact Information

Larry Gaines & Jerry Gaines

Block & Company, Inc. Realtors

Phone: 816.753.6000

Email: lgaines@blockandco.com / jgaines@blockandco.com

www.blockandco.com

The information in this listing has been provided by the broker stated above. Block & Company, Inc. assumes no responsibility for its accuracy or completeness.